

**Anti-CLN5 Antibody**  
**Rabbit polyclonal antibody to CLN5**  
**Catalog # AP60443****Specification**

---

**Anti-CLN5 Antibody - Product Information**

Application	WB
Primary Accession	<a href="#">O75503</a>
Other Accession	<a href="#">Q3UMW8</a>
Reactivity	Human, Mouse, Rat, Bovine, SARS
Host	Rabbit
Clonality	Polyclonal
Calculated MW	41497

**Anti-CLN5 Antibody - Additional Information****Gene ID** 1203**Other Names**

Ceroid-lipofuscinosis neuronal protein 5; Protein CLN5

**Target/Specificity**

Recognizes endogenous levels of CLN5 protein.

**Dilution**

WB~~WB (1/500 - 1/1000)

**Format**

Liquid in 0.42% Potassium phosphate, 0.87% Sodium chloride, pH 7.3, 30% glycerol, and 0.09% (W/V) sodium azide.

**Storage**

Store at -20 °C. Stable for 12 months from date of receipt

**Anti-CLN5 Antibody - Protein Information****Name** CLN5**Synonyms** BMPS {ECO:0000303|PubMed:37708259}**Function**

[Bis(monoacylglycero)phosphate synthase CLN5, secreted form]: Catalyzes the synthesis of bis(monoacylglycero)phosphate (BMP) via transacylation of 2 molecules of lysophosphatidylglycerol (LPG) (PubMed:<a href="http://www.uniprot.org/citations/37708259" target="\_blank">37708259</a>). BMP also known as lysobisphosphatidic acid plays a key role in the formation of intraluminal vesicles and in maintaining intracellular cholesterol homeostasis (PubMed:<a href="http://www.uniprot.org/citations/37708259" target="\_blank">37708259</a>). Can use only LPG as the exclusive lysophospholipid acyl donor for base exchange and displays

BMP synthase activity towards various LPGs (LPG 14:0, LPG 16:0, LPG 18:0, LPG 18:1) with a higher preference for longer chain lengths (PubMed:<a href="http://www.uniprot.org/citations/37708259" target="\_blank">37708259</a>). Plays a role in influencing the retrograde trafficking of lysosomal sorting receptors SORT1 and IGF2R from the endosomes to the trans-Golgi network by controlling the recruitment of retromer complex to the endosomal membrane (PubMed:<a href="http://www.uniprot.org/citations/22431521" target="\_blank">22431521</a>). Regulates the localization and activation of RAB7A which is required to recruit the retromer complex to the endosomal membrane (PubMed:<a href="http://www.uniprot.org/citations/22431521" target="\_blank">22431521</a>).

#### **Cellular Location**

[Bis(monoacylglycero)phosphate synthase CLN5, secreted form]: Lysosome

#### **Tissue Location**

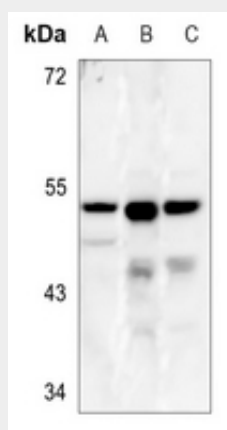
Ubiquitous..

### **Anti-CLN5 Antibody - Protocols**

Provided below are standard protocols that you may find useful for product applications.

- [Western Blot](#)
- [Blocking Peptides](#)
- [Dot Blot](#)
- [Immunohistochemistry](#)
- [Immunofluorescence](#)
- [Immunoprecipitation](#)
- [Flow Cytometry](#)
- [Cell Culture](#)

### **Anti-CLN5 Antibody - Images**



Western blot analysis of CLN5 expression in A375 (A), mouse brain (B), rat brain (C) whole cell lysates.

### **Anti-CLN5 Antibody - Background**

KLH-conjugated synthetic peptide encompassing a sequence within the center region of human CLN5. The exact sequence is proprietary.